



# \*\*\*\*\*FORERUNNERS

Journal Of The Philatelic Society

For

Greater Southern Africa

Vol. IV, No. 1, Whole #8 - Feb/May '90

Editor & Publisher: William C. Brooks VI, P.O. Box 2632

San Bernardino, CA 92406 USA

Affiliated With The American Philatelic Society & The Southern California Federation

## \* OFFICERS\*

Syl C. Tully - President, P.O. Box 5627, Hamden, CT 06518

John D. Rightmire - Vice President, PSC Box 3282,  
George A.F.B., CA 92394

William C. Brooks VI - Secretary/Treasurer, P.O. Box 2632,  
San Bernardino, CA 92406

Louise van Ingen - Director/Programs, P.O. Box 369,  
Placentia, CA 92670

R. Timothy Bartshe - Director/Archives, 8826 W. Custer Pl.,  
Lakewood, CO 80226

## \*INTERNATIONAL REPRESENTATIVES\*

Australia: D.H. "Pat" Madden, P.O. Box 122, Ormond,  
Victoria 3204, Australia

England: Roy Setterfield, 18 Goldemid Rd., HOVE  
BN3 1QA, East Sussex, United Kingdom

Germany: Werner K. Seeba, Einstein Strasse 54, D-7000,  
Stuttgart 50, West Germany

Japan: Yutaka Ohkubo, 31-18, Yushima 2-Chome,  
Bunkyo-Ku, Tokyo 113, Japan

Middle East: Alan Drysdall, c/o B.R.G.M., P.O. Box 1492,  
Jiddah 21431, Saudi Arabia

South Africa: Nick Meisel, P.O. Box 7127, Brackendowns  
1454 RSA

Switzerland: George van den Hurk, P.O. Box 4833,  
CH-6304, Zug, Switzerland

United States: Dave Wessely, 125 Elma Drive, Elyria,  
Ohio 44035

(Contacts also in the following additional countries: Bel-  
gium, Canada, France, Malaysia and The Netherlands.)

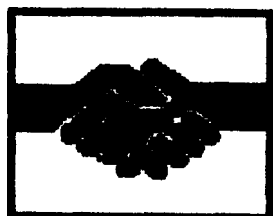
\*\*\*\*\*

## Contents

## Page(s)

* News of the Membership	1-2
- Welcome Aboard	
- Member Biographies	
* From The Editor & Correspondance	2-3
* A Few Words From The Board	3-6
* The International Scene	7-9
* The Forerunners Forum	9-14
- Questions & Answers	
- Unanswered Challenges	
- Bits And Pieces	
* Feature Articles	15-34
"Some Brief Notes On Regular Issues And Back-of-the-Book Of Bechuanaland, New Republic and Stellaland"	
"Cape of Good Hope Triangle Multiples"	
"The Cape of Good Hope Triangles And Their Cancellations"	
"The Free State: Pre-Stamp Postal History And The First Definitives"	
"One Hundred Years Of The Barberton Post Office: Part I"	
"The Most Noble Order Of The Garter And The Southern Africa Connexion"	
* The Classifieds	35-38

Individuals interested in more information about the Society, should contact the  
International Representative nearest to them geographically.



M1'1.4fZ2!!!

• **Gary J- Aneiaaet - #89-80 - Dexter,** Michigan. Gary's Interests Include South African postal stationery, especially forgeries and aerogrammes. His affiliations include Amer. Phil. Soc., Int'l Soc. of Japanese Philately, Amer. Assoc. of Philatelic Exhibitors, Haitian Phil. Soc., U.S. Cancellation Club, Amer. Belgium Phil. Soc., & Amer. Air Mail Soc.

• **Mickael J-C- Sadtk - #89-31 - Basingstoke,** Hants, UK. His speciality is the Orange Free State - especially postal stationery. He is a member of the OFS Study Circle and Anglo-Boer War Philatelic Society.

• **S- Jardine - #89-32 - Brackendowns, Merton,** RSA. He collects the Rhodesias with the following specialization: 1963 N. Rhodesia definitive varieties, 1910 Rhodesia Double Heads, all Rhodesia fiscally used items and all southern Africa revenues.

• **D-H- 'Pat' Madden #39-33** PSGSA's first member from the Island continent, "down under", residing in Ormond, Victoria, Australia. Pat has gratefully agreed to be our Int'l Rep for the greater Australian area. Pat's collecting interests include CGH, Natal, OFS, Transvaal with an emphasis on Anglo-Boer War postal history. He has other affiliations include Br. W. Indies Study Circle, Anglo-Boer War Phil. Soc. and a number of local philatelic organizations.

• **Peter W- Queaet - #89-34 - Belleville,** Michigan. Peter is most interested in CGH, Natal, OFS, Transvaal, general Br. Africa, **SWA, the Rhodesias, the Bechuanaland, Swaziland and Zululand** His specialties include the local issues of Transvaal and OFS shadings. He is a member of the Amer. Phil. Society.

E RS, Vol.IV.No I - Feb/May "

• **James IG McCartaey - #89-35 - Freeport,** Ohio. Jim's philatelic interests include CGH and general Br. Africa. He is a member of the Amer. Phil. Soc., Amer. Air Mail Soc. and the local Tussoora Stamp Club.

• **Stereo Za.perali - #19-39 - Springfield, VirgWa.** Steven collects CGH Griqualand West, OFS and Basutoland. He also has a number of specialties which include CGH rectangulars-all types of cancels & used & revenues; numeral obliterators of pre-lemon states; CGH used in Basutoland; Basutoland SA and definitives used; used revenues of Griqualand W., CGH and OFS; and OFS used. "orange tree" definitives. Member of the Amer. Phil. Soc.

• **Nick Melsel - #89-37 - Our newest member** hailing from RSA, has also agreed to take over the role of Int'l Rep in that area. Nick's philatelic interests include CGH, Griqualand W., Natal, OFS, New Republic, Stellaland, Transvaal, SWA, RSA, the Rhodesias the Bechuanaland, Basutoland, Swaziland and Zululand. Nick is a published Transvaal forgeries specialist.

• **Jeff lawman #W33 - Brooklyn, New York.** Jeff specializes in all aspects of CGH. His other affiliations include the Amer. Phil. Soc., Mailer's Postmark Permit Club and the Local Post Collector\* Soc.

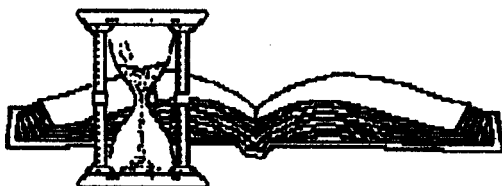
• **Yutaka Okkabo - #19-39 - OUR 70TH** MEMBER and newly installed Int'l Rep for Japan. Yutaka resides in Tokyo. He specializes in CGH with a focus on forerunners & the Boer War. Yutaka is affiliated with the Royal Phil. Soc. London & the Amer. Phil. Soc.

• **Russell M: Warree - #39-50 - Logan, Utah.** Russell's collecting interests include CGH, Griqualand West, Natal, Orange Free State, New Republic Stellaland, Transvaal, SWA, SA/UMon, the Rhodesias, the Bechuanaland, Swaziland, Basutoland and Zululand. The South Africa Union period and Southern

**wAcamAi6arro. - . cCafd**

Rhodesia are his first loves. Russell's specializations are the political issues of all southern Africa countries. He is also a member of the Amer. Phil. Soc.

**assess:amssaasas:asassaaa:aa:**



#### MEMBER BIOGRAPHIES

Ray McCoy - #89-23. was born on August 14th in Chehalis, Washington and is a teacher-salesman by trade. His primary philatelic interest is world-wide with special emphasis on SWA. Ray's other pastimes include photography and travel. He holds a Bachelor's degree from Humboldt State Univ.

• Tim Mahon - #99-02. was born in Knutsford, Cheshire, England on March 27th. Tim is the Sales Manager for a major publishing and information systems group. He collects Br. Africa - particularly Basutoland, Bechuanaland and RSA. Other hobbies include military history, classical music, opera, good wine, fencing and tennis. Tim says that he travels extensively in his work, primarily to Asia, Europe and the U.S. He enjoys trying new types of food & drink and tries to understand different cultures & political systems.

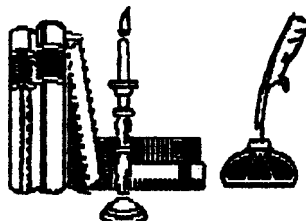
• Francis Eustace - #f9-03, was born on the 8th of December in Lahore, Pakistan. Francis is married to Magda and has one son, Craig. He is a self-employed author who received an Honours Degree from Oxford University. Francis' primary philatelic interest is the hyphenated 1/2d Springbok and id ship

**FORERUNNERS- Vol.IV.No 1-FebI May'90 p2**

of the SA/Union. His other activities include "twisting the tails of government and government printers" and is the treasurer of a local philatelic society. Francis adds that I nearly married and American, but was turned down. I nearly joked and American Company, but was turned down, volunteered for Vietnam, but was turned down. Do you think, if I submitted copy to PSGSA that my luck would change, or is there something against the Irish?"

-----  
**OftrA€afes...** Our thanks to member Gerry Halmo' for donating a copy of Vol. I of the OFS Handbook to the Society Library. According to our Archivist, Tim Bartshe, this part of the three volume work is no longer available from OFFSC in its original bound state . . . The volume is a must for any serious OVS collector or Society dealing with this fascinating forerunner state.

**ssamssssosssaasass=ssssmaassss:o**



**7510W TAF'  
E17YTOR**

- Let me start off by  
thanking the many of

you that sent messages of Season's Greetings. The cards and words of warm support are sincerely appreciated.

I trust that each of you thoroughly enjoyed the previous issue. The breadth and scope of "hits And Pieces" and feature articles clearly demonstrated our growth and maturation. This is one editor who has been truly blessed with rich member resources. A number of my counterparts have complained about the difficulty of getting material for publication, "to

**Fan 77e'Ed1'ar... crantb'**

member has something to contribute; and lo' & behold, look what has come forth for all of us to enjoy/learn from.

The feedback on Forerunners clearly demonstrates we are on the right track.

However, never **One** to rest on one's laurels, I am seeking the assistance of all readers. Enclosed is a short survey instrument. Please take a few moments to complete and return it. Your responses will be used to "fine-tune" our journal, to better meet the needs and interests of all members. On the reverse side of the survey form is another copy of the ballot for the "Charles Lupo Memorial Award". The number of completed ballots received thus far has been so small, that selection for the honor is not yet possible. PLEASE VOTE ON YOUR CHOICE FOR THE BEST FEATURE ARTICLE OVER THE PAST TWO YEARS.

-----

F \_\_\_\_\_ VolJV No 1-Feb/May'90 p3

"I really enjoyed Vol. III No. 3 of Forerunners - It made my flight -to Denver last week almost pleasurable.-". Peter Quenet, Michigan

'Forerunners is really b lng to look good and the membership is impressive" ... Morgan T. Farrell, California. .

"As for Stellaland, covers are very rare and there is a forged one going the rounds, purporting to be sent via Christiana of which you may not be aware. I will send more information in due course." Jan Mathews, RSA

'9 was very much surprised and pleased by the latest issue. 41 pages! Everything that is published is that much more information available ... Your request for Stellaland turned out wonderfully. I found myself hunting for 'unanswered challenges' that I might be able to help out on. The Bits & Pieces column is my favorite." . John Rightmire, George AFB,

"Latest Forerunners great! Much information included. Hope you can duplicate it again soon." --- Arthur Neu, New York

A FEW WORDS FROM THE BOARD ~a=----mass:

**axm~~saase:m~aasssnaas**

**I"ZMW**

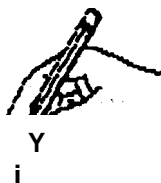
13

/F

AG

7A& 4' a ww ffrtuw

aA# to dirt 7ett" to t Air r" Armor  
relWtoWto 11, t/ktraactiw to ay of tAr cc.  
?alts of tlh'.bwxl,, as want/as tlmesi t/or#ts  
aOor,1 tAr Sbz\*ty ' ahvtA . or . R &74W  
snstlAW of a ,tea/ pelateW ast r of /risen  
tow a//, , aatA\*wtwd



"fern dvttA%wFlan 77\*

RIMV& r... Syl C. Tully

As one of the vendors in the

very successful- Society Mall  
Bid Auction, I suddenly lear-

late beg P"J!t/,oafiZ att4m\*" at nod my eyesight is not as good as I thought.

ane"WAgetat eta After submitting my lots to Tin Bartshe, his it is very pleasing to note that our group is eagle eye found several deficiencies in condigging from strength to strength, and I all tion on some of my material. I had missed directions. Most important, in philately, I note traces of fiscal cancels on one or two items, with pleasure that the quality of Forertnnera which were not entered in the final sale. I also is also." - George van den Hurk, Switzerland had missed a concealed repair on another

**Nd1X W. "tA WW ... craatil**

**Item, which** was not entered for sale. On one rather high-priced Item, I had missed a light crease. As a result, even though my reserve was low, there was no bid on the Item, probably because Tim had quite properly described the fault when he listed it.

On the plus side, two of the Items I submitted proved to be perforation varieties with substantially greater value than I had assumed. Again, Tin's eagle eye caught this, and the descriptions and estimates were adjusted accordingly.

The lesson to be learned from all of this, at least for me, is not to be too hasty to catalogue a stamp and to be more careful in my examination of the stamps I have. In both cases of fiscal cancel traces, I could have seen them if I had used my UV lamp on them a long time ago. For the benefit of those not familiar with this procedure, looking at a stamp under ultra-violet will usually show traces of any cancellation, however faint. In the case of higher denomination stamps, **which could be used either as postal or revenue use, the best course is to suspect all** of them of having been used fiscally.

There are a few other things worth knowing about fiscal cancels. Some are quite similar to postal cancels and can easily be confused with postal use. A prime example is often seen on high denomination Transvaal Edward VII Issues - the "JOHANNESBURG CTO" or "CONTROLLER" small circle cancel is often seen and looks very much like a postal use.

On the otherhand, many small P.O.'s in Zululand used circular or oval purple handstamps as postmarks. For reference, see The Postal Marks of Natal by Hart. Kantey & Leon. I have picked up some very **good Zululand at fractions** of their worth out of dealers' stock where they were described as fiscally used

E

. VolJVM-1. FebMay'90 p4

If some of our members were Interested, I am sure we could establish a continuing Inform-ation column on fiscal versus postal cancels in the countries of our Interest. Photocopies, full size and measurements in millimeters would

be very useful. (mss **r rhMwtad ii amt /urt**

**xiat a &t\*7x7 b3'bi**. Aorta' crcd/vEavate w  
**tb SX, u#t i lArt lxrta!l#nt**

**4qc mw l F Mri 't**

)

! &NW40 **TERY i lLCJ°iOHT ffV a**

John D. Rightmire

In response to a request to the APS Director of Administration, I received the addresses of more than 60 APS members with an interest in the Cape of Good Hope. Culling out present Society members.' I ended up with a list of 56 folks to send recruitment packages to. The American Philatelist for October 1989, page 901, indicates that 185 APS members have British Africa collecting Interests. I am currently awaiting the addresses of these folks. Hopefully, our own membership could double by year's end. Imagine the prospects for our journal with such an Increase!

As I have in years past. I spent Halloween night planting seeds. What kind of seeds you might ask? Stamp collecting seeds. Amongst those innocent looking trick-or-treaters are the Ash brooks, Hinds and Lichtensteins of the future. The future owners of the stamps in our collections. One **only** becomes a stamp collector if she/he comes into contact with stamps. The way I "planted" those seeds was to take a small paper sack and place into it, among other things, a glassine envelope with a dozen or so stamps and a slip of paper giving instructions on where to find information in the library on the world of stamps. I stapled the bag shut and planted the seeds from my

een

**FORE**

IER.S.,VolJIV,No 1 Feb1May'90 p5

front door. I like to think that by doing this, Transvaal and Basutoland matters.

some youngster will eventually- experience On the International scene, we are blessed that unexplainable love for little pieces. of with Intl Reps.(IRs) In eight countries who are paper that so many of us know. If anyone has ably representing us by making a larger a unique way of Introducing others to stamp t of the

collecting, drop me a line and Ill share It n philatelic community aware of through this column. (Far ftuw of jw wt our presence- Information releases concerning **fAW\*,- mWA tAr AAw;br& ArAbl smn tract** Society activities are now appearing **In tkvf ,ta~aasa wk' s .k fag' as err Ya~est** various philatelic publications around-theA& "Wth~lty,oro a t **ygoartunni'y** world because -of their efforts. In acknow- to,-Aw 7yavtb to a~lrste~y.J

voting members of the Governing Body.



*F,actg F&rxas Am,' Oil<sub>er</sub> A#  
t&Era' -AWAwVO&*

I trust everyone experienced a joyous holiday season.

Our Society certainly had a banner year in 1989. Membership grew by over 100%. We held a very successful mail-bid auction - our first and certainly not our last. More on this a little later. With membership recruitment now in the able hands of our Vice President, John Rightmlre, we should expect continued growth/prosperity.

Our Director of Programs, Louise van Ingen, will continue to share her creative talents in the program development area.

As for our dedicated Director of Archives and Auction Manager, Tim Bartshe, we have a great deal to look forward to in his very busy activity areas. On top of that, Tim is still able to find the time to provide us with scholarly and enjoyable articles.

Finally, President Syl Tully continues his tradition of excellent leadership - especially as our resourceful "question & answe man". And I know he is pleased to share that

ledgement of their Importance to the vitality of the Society, your Board voted November last to designate the IRs as ex-officio/ non-During December, the Board approved a proposal to apply for affiliation with the Philatelic Federation of Southern Africa (PFSA). Our affiliation with APS has paid off handsomely with Increased exposure and membership recruitment. We are now awaiting PFSA's response to our affiliation request.

Lest we forget, the number of participants In the Reciprocal Listings Exchange has increased by two organizations - South African Collectors Society & the South Africa Study Group. Additional participants are expected in the near future. Availability of information on other related specialty groups and their activities provides each of us with a valuable resource base.

Concerning our first mail-bid auction, those involved tell me It was a tremendous success for a fairly young group's first try. The bottom line for the Society was that we netted \$72US after all expenses (Refer to the enclosed Auction Report for prices realized and other pertinent detailed Information.) Because of our first effort's success, Tim, our very able Auction Manager, is already planning a repeat performance - see announcement elsewhere in this issue...until next time.

gave us the out-of-print Volume I which deals with the Republic Issues. Thank you both!

The members\* is free and is encouraged to use this material on a loan basis. The items requested may be "checked out" on a 20-day term with the member prepaying the cost to mail the material. Upon request for a specific item in writing to me, I will forward a loan form with the required mailing costs. When the form and money is received by me, the item will be mailed with a date at which the book must be returned. If there are specific topics or pages that the member wishes to have, please state your interests and I will reproduce the appropriate pages and send them. The cost will be \$0.10 per page (8 1/2 x 11) plus postage. I would again like to take this opportunity to remind the membership that an enormous amount of reference material is available outside the Society's library. This, as well, can be acquired at a cost of \$0.10 per page. Please send me *your* inquiries for material and I will accommodate you the best that I can.

Tim Bartshe

I was fortunate to be able to attend the World Stamp Expo in Washington D.C. this Thanksgiving. The

show appeared to be very well attended during the holiday and with over 200 booths and vendors, there was much to see. While paying a visit to the Smithsonian Museum of American History, I inquired with the custodian of philatelic material as to the material held by them. After the obligatory comment about how many million items they had, I asked how one might view material. I was told it is best to give them advanced notice and to set up a specific day or days in which you choose to view material. (Due to the Stamp Expo, it would have been impossible for me to get in over the holiday.) Upon arrival, a member of the staff will aid you in viewing the material that you have requested. They have all the equipment necessary to photograph with, including the copy stands and, I was told, cameras. It is nice to know that this is available to anyone interested, so the next time you are in D.C., stop by. I know that I will. If anyone has taken advantage of this, please let me know.

Our Editor informs me that there have been inquiries with regards to the Society's Archives. In addition to the items mentioned in the last column, we recently received a copy of tick Melsel's remarkable work, 11w Transvaal Handbook, from Morgan Farrell, which deals with the First Republic's Issues and their forgeries. We also have completed our collection of the handbooks from the Orange Free State Study Circle, by the generous donation of Jerry Halmo. Jerry



"I don't care if you are a part-time stamp dealer; you still have to do your homework".

The Stamp Wholesaler

# •ANNUAL AUCTION - OCT- 5. 1990P

Due to the response by vendors and bidders alike, the Society wishes to notify the membership that another auction will be held In 1990. The Auctioneer will accept material from vendors between April 1 and May 31, 1990\_ As with last year's auction, the terms for the bidder and vendor will be the same with a 10% sales commission to vendors who are members and none to bidders who are members In good standing. Non-member vendors pay a 15% sales commission.

Any and all material pertaining to the greater southern Africa area Is suitable. This Includes, but Is not limited to, postal history, literature, postal stationery, postage stamps, telegraphs, fiscals and **Cinderellas**. **Countries appropriate for sales Include the Rhodesias, Basutoland, the Bechuanalands, Swaziland, Transvaal, CGI L Natal, OFS, Zululand, New Republic, Stellaland, British East Africa, RSA, SWA and Griqualand West & East.**

The catalog will be mailed sometime M mid-July to all members & any other Interested parties **which** mall In requests. The Auctioneer will once again be Tim Bartshe. Mail any appropriate correspondence and material to be included In the auction to **him at 8826 W -Custer P1., Lakewood, CO 80226 USA.**

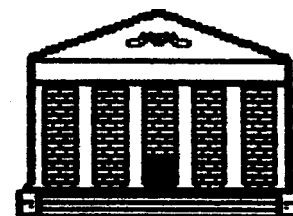
Requests for catalogs from non-members should be sent to the Journal Editor.

**PLEASE COMPLETE AND RETURN THE  
MADER SURVEY FORM AID YOUR  
BALLOT CHOICE FOR THE 'CHARLES  
LUPO MEMORIAL AWARD!--- THANKS**

\*\*\*\*\*a\*

**FORERIIINERS. VolJV. No.1 FebfMay'90 p7**

## THE SOCIETY TRUST



Our group Is very fortunate indeed to be blessed with generosity and active support from the membership. This new feature will provide listings of donations and gifts received to-date.

*Possta4v - MV - Contributors: Chuck Lupo, Bill Brooks, John Rightmlre, anonymous (3)\_*

*Ga0 - 3Y - Contributors: George van den Hurk. John,Rightmlre, anonymous (1).*

*LA%wary/AraW t Items donated: Volumes 1, II & III of the. OFS Handbook. Transvaal Philately. Transvaal Handbook. seven (7) Issues of the SA Philatellst and seventeen (17) Issues of The Springbok. Contributors: the Orange Free State Study Circle, Gerry Halmo, Bill Brooks, Morgan T. Farrell, Anita Beach\_*

## . IHE. INTERNATIONAL

~•

With this Issue,

## SCENE

we wel

come Nick I !else Is as the New Intl Rep QR) for RSA. **Jack** Grutter regretfully found It necessary to resign due to other pressing demands. His support was certainly appreciated In the early goings of the Society. From Nick's communications, it Is apparent that he will be a welcomed, enthusiastic addition to the IR ranks.



Not to be out-done on one side of the globe, we now also welcome our IR for Japan, Yutaka Ohkubo, who just happens to have been our 70th member by registration! It will be fascinating to see what develops out of the Pacific Rim area now that we are ably represented there.

-----  
**The Reciprocal Listings Exchange** -----  
-----

Any organization whose philatelic focus falls within the scope of PSGSA's areas of Interest, is invited to participate in this Information exchange. General Information about an organization, its activities and special events is welcomed for publication in Forerunners. All that is required is that PSGSA be offered the same opportunities in the publications of the participants. Exchange of publications between participants for library/archiving purposes is encouraged. An organization wishing to publish Information releases on special events should note the submission deadlines listed in the classified ad section.

-----  
• **Dutch Philatelic Society of Southern Africa** - Founded in 1988 by Dutch collectors, focusing upon the following countries: South Africa, SWA, Ciskei, Transkei, Venda, Bophuthatswana, Lesotho, Botswana, Swaziland, Zimbabwe, Zambia, Malawi, Angola and Mozambique, as well as all former and future countries within this area. The Society publishes Barthomeu Dias four times per year. A postal auction is held twice each year and an exchange-packet system has been started. The membership fee is 25 guilders per year. Subscription to their magazine only is 15 guilders per year. For further Information on the Society, please write: Secretary FVZA, J. Stolk, Wilgensingel 186, 3053 CZ Rotterdam.

• **South Africa Collectors' Society (SACS)** - The Society was formed to encourage and promote the collecting of stamps and postal history of both Union and Republican Periods, and more recently the "Homelands", SWA, Ciskei and Natal. The annual membership fee is £5. Periodic postal auctions are held. Membership inquiries should be made to: Mr. D.W. Painter, Hon. Membership Secretary, 13 Alma Road, Romsey, Hants, SO518EB, United Kingdom. SACS recently had a meeting with the Rhodesia Study Circle and the East Africa Study Circle, on air routes. They also note that the Bechuanaland-Botswana Society has hired a room at the London 1990 exhibition for three days and are now arranging for half days to be sublet to other African-focused societies.

-----  
• **South Africa Study Group (SASG)** - The Society, founded in 1987, is an active group with members in several countries. SASG focuses upon all aspects and periods of philately of RSA. The group publishes The Springbok Philatelist three times per year. Further Information may be obtained by writing: Sidney Goldfield, SASG, 309 W. 72nd St. #3D, New York, NY 10023

• ~~**Orange Free State Study Circle**~~ - Founded in 1953, OFSSC provides an excellent resource for the OFS/ORC collector. Its journal, The Orange Free State Bulletin, is a must for the specialist. Additional information may be obtained from: Hon. Secretary, J.R. Stroud, 28 Oxford St., Burnham-on-Sea, Somerset TA8 1LQ, Great Britain. -----

• **Transvaal Study Circle (TSC)** - (Still waiting for their official "ad".) Further Information: Joan Matthews, Hon. Secretary-Treasurer, Bramley Cottage, 27B Lancaster Gardens, Beltinge, Herne Bay, Kent, CT6 6PU, UK

*The International Scene... cont'd*

**Events of Note**

\* *Stamp World London '90*, May 3-13. Stamp World London, Box 1990, 107 Charterhouse St., London, UK. (Roy Setterfield is the Society's informal host - address on the front cover of this issue.)

' M VA ' - August 8-12. Sparta Conference Center. NORDIA'90, Alan Warren, Box 17124, Philadelphia, PA 19105 USA

**AFVZEALAAVAW** - August 24-Sept. 2.

Auckland Showgrounds Complex. New Zealand 1990, Box 4069, Auckland, New Zealand.

, **WE/N** 1 - August 29-September 2. Hofburg Facilities. R.K. 'Dick' Maloot, 16 Harwick Crescent, Nepean, Ontario, Canada K2H 6R1.

**AWLA4#Y39W** 91-November 16-24\_Tokyo  
International Fair Grounds. PHILAN IPPON '91  
Committee, 91 CPO, Box 91, Tokyo 100-91. \$\$\$\$\$\$  
\$\$\$\$\$\$\$\$\$Ssss3\$\$\$\$\$\$\$\$\$S\$\$\$\$\$

**Foreign Exchange Rates**

Rates quoted are as of press time and will vary, depending upon the size of a transaction. The currencies selected represent countries in which the Society has members. Rates are shown in per US \$ equivalents.

\*Australia - Dollar ...1.25/\$ '  
Belgium - Franc ... 35.46/\$ '  
Britain - Pound... .5932/\$ '  
Canada - Dollar ... 1.157/\$ '  
France - Franc... 5.7565/\$ '  
Japan - Yen ...141.90/\$  
'Saudi Arabia - Riyal ... 3.748/5 '  
Switzerland - Franc ...1.5310/\$ '  
South Africa - Rand ... 2.54/\$ 'West  
Germany - Mark ...1.6855/\$

**FORERUNNERS, Vol.IV.No.1, Feb/May '90 p8**

Member Rae Wolpe has volunteered to translate articles written in Afrikaans for publication in Forerunners....many thanks Rae.

**THE FORERUNNERS FORUM**



**Ore'stlav A A/ISUa7**

By

Syl C. Tully

Ian B. Mathews

Questions concerning Transvaal and Basutoland should be sent to both Column Editors. Questions pertaining to all other countries are to be sent to only Syl. Ian's address is P.O. Box 81254, Parkhurst, Johannesburg 2120, RSA. Syl's address in on the cover page. All questions and answers will be published. At times, questions may also be forwarded by the Column Editor to other member specialists, e.g., OFS-Tim Bartshe, Rhodesia-Bill Wallace. Questions for which the Editors have been unable to research an adequate response, will be listed in the follow-up column "Unanswered Challenges For The Scholar".

**NorthwA0'A- 'WAirt are tAr part marts of the A&taAde~k m ofd'?"**

**answer:** Two answers occur, under two sets of conditions. On the actual provisionals, what I have usually seen have been Barred Diamond cancels of Bulawayo, very heavy, on the first (rare) set of provisionals of April, 1896, and circular date stamps of Gwelo, Bulawayo and Belingwe occur on the overprinted Cape stamps of May 22, 1896. Stamps used on October 8, 1896, the last day of the rebellion, are cancelled in violet on the large

large arms issue of 1896-99. (Reference Robson Stanley Gibbons for their use was authorized Lowe for this.) there for a few days. You will notice in the Under the second set of conditions, one could more recent SG Part I catalogues that they consider any cancels of TATI, FIGTREE (are no longer priced unused, **only** used. This doubtful of used during the rebellion as I was my doing. British Commonwealth Rev by J. believe it fell into native hands) as Rebellion Barefoot & A. Hall, published by J. Barefoot (postmarks if dated between March 31, 1896 and Investments) Ltd, 1980, 2A Bootham, York October 8, 1896. Please note one shipment of mail Y03 7BL, England, ISBN 0 906845 06 8, lists them in went out from Bulawayo via the TULI road on full.

April 5 and a TULI cancel of that time (April 5-7) Telegraph Telephone Stamps of the World by S. could be Rebellion use. Only three post offices E.R. Hiscocks, 1982, published by Dr. S.E.R. were in British hands from then until October 8, Hiscocks, P.O. Box 77, Woking, Surrey GU22 01-18, 1896 - Bulawayo, Gwelo and Bellingwe. Oddly England, ISBN 0 950830100, states that these VRI enough, a Mafek Mg cds on Rhodesian stamps overprinted revenues of the ZAR were between March 25, 1896 and the end of the specifically issued for telegraphic purposes Rebellion is indicative of rebellion mail being and as values ran out, ZAR postage stamps sent "through the lines", as it were, from and later, KEV11 postage stamps, were intermediate areas within the rebel-held area overprinted "Transvaal Telegraphs". I query the There are also a few stampless covers on active specific telegraph use.

service known from the relief force and from The rate for telegrams was 1s for 10 words or Fort Imyate - VERY SCARCE! less so that telegrams always cost 1s or multiples thereof. The Use of the Johannesburg Registered canceller is almost certainly part of

*Question #14 - "I have three pieces, each of which contains one of the Volksrust issues of 1902, but they are all cancelled in Johannesburg. The first contains only the SG#3, the 1s, cancelled with a double-ringed cds with 'REGISTERED' on the upper half, 'JOHANNESBURG' on the lower half with the date followed by the time across the middle. The second contains the 6p SG#2, paired with the ERI 2/6 for a total of 3s. Same cancel but dated 20 Dec. 02. The third is the 2/6, SG#5, paired with the 6p VRI for a total again of 3s. Same cancel dated 6 May 02. Why cancelled in Johannesburg? What were the 1s + 3s rates for? Are they genuine usages of the stamps?"*

the "fog of war" where the niceties of peace time frequently go by-the-board. I know of the use of the Pretoria Pos Wisseis Departmente canceller, as an arrival mark on mail

Avwe-by **W.** - My answer is going to be an incomplete one. (tan's response will be the more complete one.) My personal thought is that these stamps were used for telegrams, but the "REGISTERED" cancel indicates otherwise. Most of the so-called Volksrust issues were used for telegrams, some were used fiscally, and a few for general postage during 1902. These issues were actually fiscal, but S.E.R. Hiscocks and Robson Lowe both note they were in fact used more often as telegraph stamps in 1902.

aww by /aa- In the first place, these are normal revenue stamps with wide-spread use and an additional telegraphic use. They are listed as postal fiscals under Volksrust by



### Unanswered Challenges

#### For The Scholar

This feature Includes questions which have "stumped" our "question & answers" coeditors. The reader Is Invited to take up the challenge.

Please forward all responses to Syl Tully with a copy to the Journal Editor.

*Challenge #1: "Can anyone speculate as to why the cover shown on page 10 of the Oct/Jan '90 issue is totally stampless? Perhaps something to do with the Boer War?"*

*Challenge #2: "Does anyone have information about the De Waal Forwarding Agents, Durban and Delagon Bay? I would like some history on the company. In the only list I have seen of pre-Union forwarding agents, they are not mentioned. I have two of their labels, both cancelled at Point, Natal, in the 1890's. One is on piece with a 1d postage stamp, cancelled Oct. 10."*

*Challenge #3: "Why did Natal use embossed stamps?"*

*Challenge #4: "Why is the cover shown on page 12 of the Jan/Apr '89 issue a 'fake' cover?"*

*Challenge #5: "Most collectors are aware of the pricing controversy in the new Scott Catalog. What percentage of the prices quoted in the South African Stamp Colour Catalogue make up actual market value in South Africa?"*

*Challenge #6: "I have a 1/2p Swaziland overprint of the first issue (Sci#1). The 'SW' is omitted on it, but Robson Lowe only show it missing on the 2p. Anyone have an knowledge of this? (Postally used-EMBEK-ELWBNY)"*

## FORERUNNERS, Vol.IV, No.1 Feb/May '90 p11

### • • BITS AND PIECES • •

The following Is a list of topics which members have Indicated they would like to see covered In this column In the future: postage due letters In or out of Bechuanaland Protectorate (BP); BP revenue stamps still on documents; military mail from BP; Interporviciat usage of BP stamps; odd cancels on CGH stamps; all known revenue overprints on non-revenue numbers noticed on Cape rectangles; plate CGH stamps; plate or control number CGH stamps on cover; pre-stamp period covers and/or letters; old maps or pictures or drawings of southern Africa; single items of Interesting covers, cards, pieces or just loose stamps with nice postmarks; unusual postmarks; fotostats of picture post cards of old SA before 1910; anything to do with air mails, especially crash covers, problem covers, postmarks, cachets; photographic comparisons of forgeries of any kind; interprovisional covers; covers with multiple pieces.

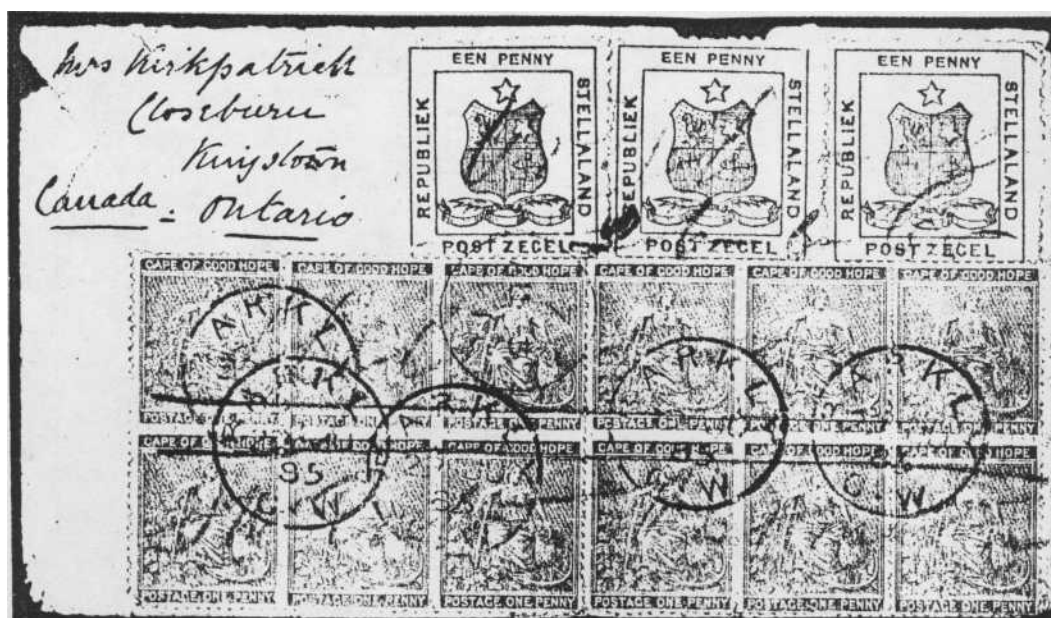
-----In the previous issue, John Rightmlre showed us a ships letter with an 1808 postmark which was speculated to perhaps being In the "earliest known" category. In a follow-up letter, John said that member Dr. Taylor sent him xeroxs of two covers that show a CGH ship letter marking which may be earlier than the one previously illustrated; not because they are dated (they are not), but because the person they are addressed to died In October, 1807. John's cover Is actually dated 20 December 1807.

-----Tim Bartshe sent In copies of a couple lots In an SG auction which Includes over 272 OVS covers. A large portion of the offerings are from the Batten and Fern auctions. On the next page are two sample "dream lots".

Lot # 338: 1873, August 12, envelope from Bloemfontein to Berlin bearing 6d pale rose, tied by 1 In barred oval used in combination with Cape 1d (2), 4d and 1/- tied by 1 in barred rectangles and Cape Town NO 1 73 cds, plus red London paid cds over "1/1" in red crayon, despatch and arrival backstamps (ex Batten) - estimated value £400.



Lot 677: Combination cover - 1885 June 26, envelope to Ontario, Canada, bearing 1884 1d pair and single plus Cape 1d in two blocks of 6, all cancelled by manuscript legend "Vryburg/26-6-85/J.W. Eaton/Postmaster" in blue crayon, the Cape adhesives additionally cancelled by Barkly G.W. 29 JU 85 cds and a Canadian transit mark tied on the Stellaland adhesives: reverse with a further strike of the Canadian transit along with 2½d red h/s in red, Cape Town and London cds's - estimated value L17000 (Tim says will go for £20000).



&tsAWWRA w... walk/

FORERUNNERS Vol. IV No- 1- Feb/May '90 p13

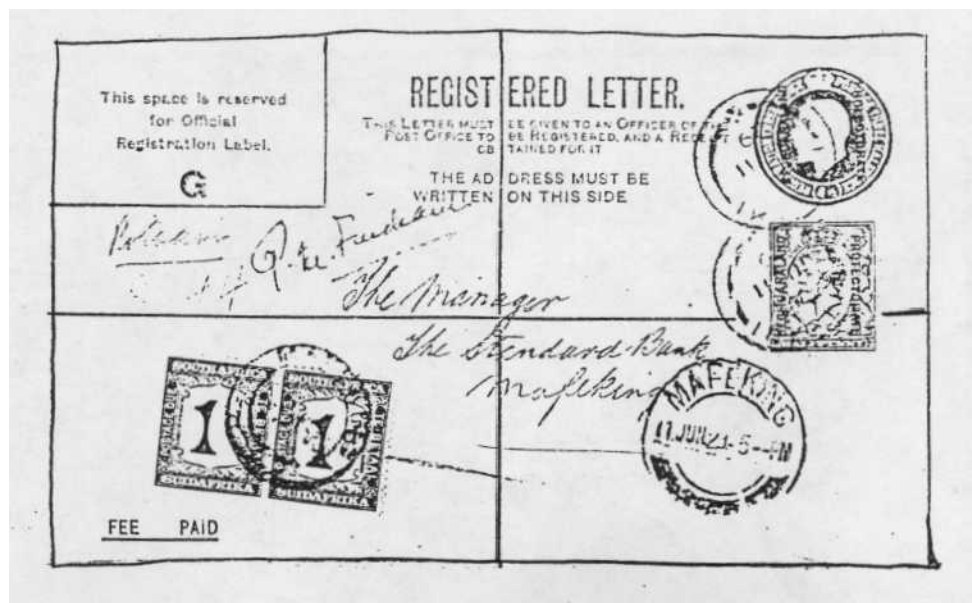
Member Jack Loch of New Jersey, sent word about a project he has been working on, on-and-off for some time. Basically Jack is attempting to coordinate all of his catalogues, e.g., Scott, Gibbons, Higgins & Gage, Sherewood, Barefoot, Buckley & Marriott, Pennycuik, Robson Lowe, and others, into one massive cross-reference list/want - list/price listing. The Scott/Gibbons segment is almost done. Scott values are in \$'s and SG prices are in pounds. The listing layout is as follows:

				Sc Val. Sc Val. Sc Val. SG Val. SG Val.				
Scott#	SG#	Yr Issued	Description	19\$	1W	MQ	M9	10
10a	8	1868	1s orange buff	\$11.00	\$11.00	\$7.75	£40.00	£45.00

Jack plans on offering his project for criticism, proofing and/or members use. This is quite a massive project and I am sure Jack would like to hear from interested parties. His address is Box 765, Cherry MI, NJ 08003 USA.

David Wessely, our IR/USA, has sent along several interesting postage due covers from Bechuanaland. On this and the next page are copies of some of them for our enjoyment. More will be exhibited in future issues.

Illustration \*1: 2/6 Seahorse (Scott #94). Sent from Mafeking on November 28, 1900 to the UK. Received mark from Tadworth with two 2p UK dues (either J12 or 20) - indistinct date. Several markings on the cover: circular T 4d, octagonal T 40, large numeral 4 with I.S.D. and handwritten message "stamps not admissible for payment of postage in the Union of South Africa", Initialized P. M. (perhaps to stand for Postmaster?)





6~fs.4~dPXe

plr

Covws..cwtb' FORERUNNERS- Vol.JV-No.i - Feb/May P14

Illustration #2: Registered Bechuanaland Protectorate stationery 4 1/2d (HG#16) plus 1/2d (Sc#96). Canceled on June 11, 1929 in Pitsani, Bechuanaland, arrived In Mafeking and two 1d South African stamps (J18) were affixed June 17, 1929.

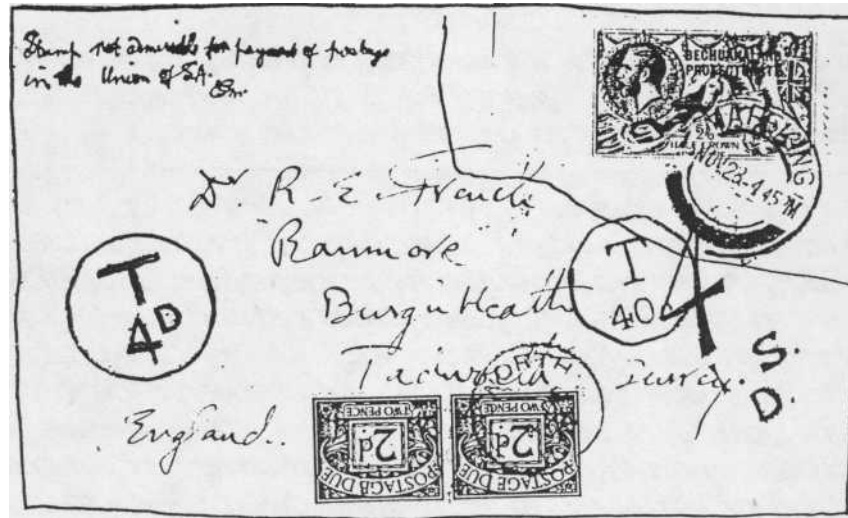
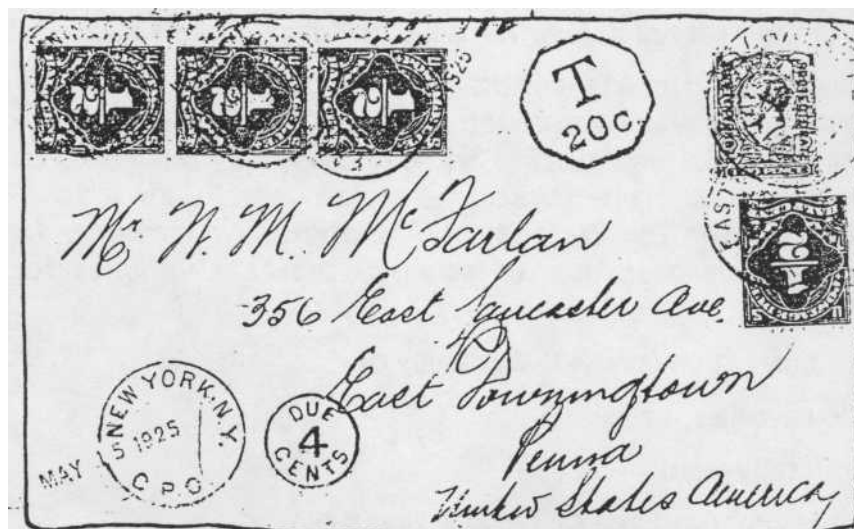


Illustration #3: From Mahalpye, Bechuanaland Protectorate, dated Apr# 9, 1925 with Bechucnaland Protectorate 2d (Sc#99) to USA carrying octagonal T 20 c, arriving In New York on May 15, 1925 with 4c postage due, cancelled In East Kensington, Pennsylvania with eight 1/2 cent stamps (J18).



## FEATURE ARTICLES

FORERINN 2'. VoL IV. Na 1- FebIMay p15

gchto's Abte<sup>+</sup>.SY s(w of n,at&-Ms for pWkat/on li the .farawl 4' acwpted as as a  
0g6WVdas\*k Art"" &kWWGeb tlg0W tte4 drx~Ye- c~sdfomrc /a(~//y, artkyeir Alare'd /eve a /lxax M  
V& of five ,u mot Ymi r hiartratkae /f 1t vtratkors are Y  
the dearest capyposu(e !s regwsted Gir0a/s ofyo'eyu~s andcxtrrts ale cvefe sb/ /t /s rested  
that rather/e#gthyarthc'es br so \*112 rd

Penba 'ca//y, artkyesr wai/advent

eve Gs ,arev/caudy o~u6V 1d%l e4 Tie ac"-s

w\*the **"lect** of the work /s /

to de of hterest and MAW to So \*ty mead A,qwgcWate

creptY wal/ of c&se be g'vw to the oran) -----

-----For those readers afesil 7 a "/ect to write about, the fa//owAy tgAV r /&ve  
ber meted byat s to be ones they waWall a to sae covered h! futcre arts:- CamdPart at the

W!a Ad~-A ~a/aadPhote~ctorate,-foryerykewt/l at~forr ofd//,ore`~7t -?tawsb'r7

by a tress covered by the Sc ty,-/a~riscd cs'araes aedpnrtata y of the alffe4 t &W//O

to wns and vh/ads<sup>+</sup> hLrtaries ofpoost offAW **go,** **wdoay** date. etc,- dff. rt post  
mark sues,- sues cc uce?\*g dffbw ttea/ postmark ot4m or cork canes/ers,- air crash,z<sup>-</sup>  
recbrdf/ is I ah\*ra ws to/Pro/u southern Afr/ca,-macVaepostnrarus and d c m' Gssd h! the i \*sya.g<sup>-</sup>  
17 aevth dkx of az /core<sup>-</sup> private posts of the p estate air **KWOP** /(rII  
t of posta/ routes and systemrs aer1.y the ~0-8ae H'ar, overviews of  
Zdcvan1 Ir ,.?.Male piWateiy,- savor and ,aft ar of war dzaL

Some Brief Notes On Regular Issues And Back-of-the-Book Of Bechuanaland,  
New Republic And Stellaland ... By: Ronald Carlson

Revenues are the scarcest of all New Republic usages as they were created based on the legitimate needs of the Boers conducting business in their trades and newly acquired farms. There was a rather small population in Vryheid and the environs such that the majority of the postal issues available today are mint/unused. This state of affairs was due to the efforts of Mr. Emil Tamsen, a contemporary philatelic entrepreneur who created many covers and sold a large inventory of stamps to collectors and dealers. Tamsen covers with interesting usages can be found in the Transvaal, New Republic, Natal and locals such as Bakkers Express, etc.

During Stellaland's brief existence, the Post Office's inventory of revenues were burgled and the remaining materials were overprinted with "JPM", arbitrarily upright or inverted. All revenue denominations also exist imperforate without overprint, though to-date I have not recorded any used imperforates. Imperforate pairs also exist, with a few vertical and horizontal examples recorded for the 2/- and 10/- varieties. Accordingly, there are at least seven variations of each denomination, or some 79 separate varieties for the avid collector to contemplate.

The following illustrations provide examples of:

\*New Republic revenues, used

\*Stellaland, postally used

\*Stellaland revenues, used and on piece & document

\*Bechuanaland Military Telegraphs, used (although not discussed, these are interesting)





**-NEW REPUBLIC STAMPS USED FISCALLY**

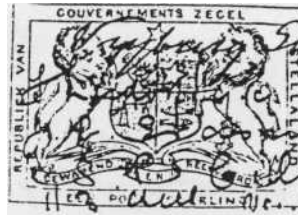
Initialed DDB (D.D. Bierma) the scribe and printer of New Republic.  
Dated in manuscript on embossed undated stamps.  
It appears that all fiscal documents were done thus and that the post office canceller was not used.  
The De Vetter buckle-type canceller was used for fiscal cancellations.



**Breakdown of Stellaland revenues illustrated:**

value	un-ovpt'd	monogram	imperforate
6d	ovpt	1	1
1/-	1		1
1/6	1	5	1
2/-	1	1	
2/6	2	1	1
5/-		3	1
10/-	3		1
£1	3	1	
£5	4	1	1





## Cape of Good Hope Triangle Multiples By John

## D. Rightmire

The Information listed below probably will not make your rich, but If you collect Cape Triangles, you might find It Interesting.

Auction catalogs will usually state whether a particular lot is the largest known multiple in hopes of more active bidding. Yet, I know of no single source that lists the largest known multiples, either mint, used or on cover. I have attempted to compile such a list for CGH triangles listed by Scott catalog number. The accuracy of my listing is limited to the references in my collection of books and catalogs. While this chart might contain errors, it is a start, that together we can finish. I have referenced every listing so that the reader will know that I did not just pull these numbers out of thin air.

My initial effort to list both Scott and Stanley Gibbons (SG) catalog numbers became too frustrating when even the authors of my references could not totally agree. Therefore, I decided to struggle through just the Scott listed varieties, with a few (SG) varieties Scott does not mention. (is it not funny how two collectors can stand side-by-side in their admiration of an album page of classic stamps, yet seriously disagree when trying to catalog the shades?) I invite the reader to critique my efforts and perhaps find an item listed in a reference of yours that is larger. I welcome all comments.

The "Block on cover" column in the table refers to the largest intact multiple on cover, not counting individual stamps. The numbers in parenthesis refer to the references at the bottom of the chart.

Sc #	DESCRIPTION	MINT BLOCK SIZ	REF.	LOT#	USE BLOCK SIZE	REF.	LOT#	BLOCK ON COVER	REF.	LOT #
----	-----	---	----	-----	-----	-----	-----	-----	-----	---
1	1p red blue paper	4	(4)	280	12*	(1)	- -	6	(3)	6'2
1a	1p dp blue paper	6	(5)	56	-	-	-	8	(5)	123
2	4p blue bl paper	12	(5)	112	13	(3)	68	5	(4)	304
2a	4p dp blue paper	10	(1)	112	14	(4)	252	4	(4)	234
3	1p rose	17	(5)	135	8	(5)	142	4	(5)	234
3a	1p dull red	2	(4)	344	4	(5)	146	4	(5)	229
4	4p blue	36	(4)	378	20	(1)	-	4	(4)	443
5	6p lilac	18	(1)	378	8	(1)	-	3	(5)	259
5a	6p grey	6	(1)	378	7	(1)	-	1	(5)	271
5b	6p blue paper	2	(5)	180	4	(5)	186	2	(4)	475
6	1/- yellow green	2	(5)	202	12**	(1)	-	6	(4)	596
6a	1/- dark green	18	(4)	621	24*	(1)	-	1	(5)	264

SC #	DESCRIPTION	MIN BLOCK SIZE	REF.	LOT #	USE BLOCK SIZE	REF.	LOT #	BLOCK ON COVER	REF.	LOT #
7	1p red	4	(5)	299	4	(5)	320	4	(5)	394
7a	1p carmine	1	(4)	699	6	(4)	717	-	-	-
7b	1p blue error	1	(4)	731	2	(5)	336	-	-	-
9	4p blue	2	(5)	337	4	(5)	363	4	(5)	397
9a	4p dark blue	1	(5)	381	2	(5)	388	1	(5)	402
9b	4p red error	1	(4)	890	4	(4)	897	4	(5)	391
9c	4p retouch corner	1	(5)	365	2	(5)	368	-	-	-
12	1p brown red	8	(5)	425	8	(4)	971	2	(4)	952
12a	1p dark carmine	32	(2)	144	8	(1)	-	4	(4)	945
13	4p dark blue	56	(2)	148	14** *	(3)	254	3	(5)	504
13a	4p slate blue	2	(1)	148	6	(1)	-	-	-	-
14	6p purple	24	(4)	1091	4	(4)	1104	2	(4)	1108
15	1/- emerald	9	(1)	1091	6	(4)	1136	2	(4)	1137
15a	1/- pale emerald	8	(5)	486	-	-	-	-	-	-
4	variety 4p black	-	-	-	1	(5)	282	-	-	-
9	variety 1p tete beche	-	-	-	2	(5)	364	-	-	-
12	variety 1p <a href="#">wmk. CC</a>	2	(5)	506	-	-	-	-	-	-

Roulettes:

SG# 9	1p rose	-	-	-	1	(5)	289	-	-	-
S8#10	4p blue	-	-	-	2	(5)	291	-	-	-
SG#11	6p lilac	-	-	-	1	(5)	293	1	(5)	296
SG#12	1/- yellow green	-	-	-	1	(4)	648	-	-	-
SG#12a	1/- dark green	-	-	-	1	(5)	295	-	-	-

\* = Reference #(1) below does not state if scott #1 or 1a is the block of 12  
 \*\* used. = H.R. Harmer sale of 17 May 1977 lists a used block of 20 as  
 being the largest known of an intermediate shade (not 6 or 6a).  
 \*\* = Reference #(5) below states that a block of 6 is the largest known  
 \* block, not the block of 14 listed above.

(1) = "Triangular Stamps of the Cape" by D. Alan Stevenson, 1950, page  
 131. (2) = Burris Auction by Robson Lowe, 27 November 1962. (3) =  
 Kohler Auction #236, 2 June 1982.  
 (4) = Sir Maxwell Joseph Auction, 28-9 October  
 1982. (5) = Dale/Lichtenstein Auction 25-6  
 November 1989.

The Cape of Good Hope Triangles and their cancellations

by: Rae Wolpe

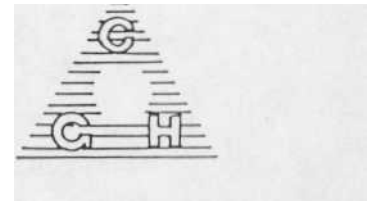
To the casual observer it would appear that Cape triangles were only defaced with one type of cancel: The Barred Triangular Obliterator. The truth; however, is that over 30 assorted cancels are to be found defacing triangles (some of which only single copies are known) and this listing excludes the many fiscal bank cancels. To determine the variety and scarcity of cancels found on the triangles, I analyzed, with the help of a customized computer program, 681 triangles from various collections and compiled the following data. This data allows any collector a quick reference to the variety and scarcity of the known cancels. The cancels are presented in order from commonest to scarcest.

I

**SMALL TRIANGULAR OBLITERATOR (STQI)**

**Issued** Throughout the Cape Colony on September 1, 1853.

**Frequency** of 68.7" (468/681 "**Scott #s not found on** are none.



II

**BARRED DUAL NUMERAL CANCEL (BONC)**

**Issued** Cape Town : June 21, 1864 : Numeral 1. 9 bars

Port Elizabeth : October 7, 1864 : Numeral 2. 9 bars

Grahamstown 1864

Numeral 3, 9 bars :

Swellendam

Numeral 12, 9 bars :

1867

Numeral 17. 9 bars

Fort Beaufort George

Cape Town : 1875

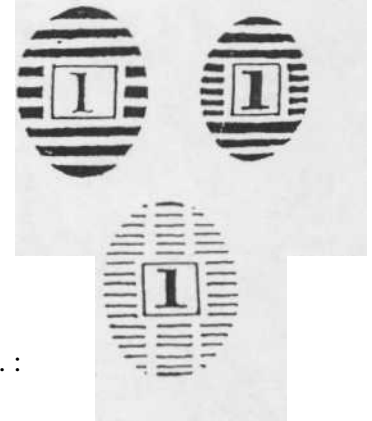
Numeral 32, 9 bars

Wynberg : 1876

: Numeral 1, 18 thin bars. :

Numeral 6. 11 bars.

**Frequency** of 7.3% (50/681)



**Scott #s not found on: 1,2,2a,6-6a,7-9c,14-15a.**

**Comments:** BONC cancels numeral 1-3 are comparatively common (in order 1,3,2), however the other five known BONC cancels are exceptionally rare with only single copies known except for the Cape Town 18 bars BONC of which four copies are known to me. The BONC cancels are extremely rare on the 1853-55 Perkins Bacon issue (3 are known to me), slightly less rare on the 1855-58 issue with 10 being recorded, while quite common on the De La Rue issue with 37 recorded

## CGH Triangle

## Cancellation contd

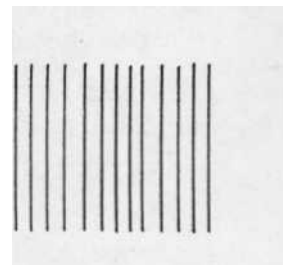
(**comprising** 38% of all cancels on the DLR issue ) There is a strong possibility that other numbers exist as many were issued in the 1870s when triangles were still in use.

### III GRAHAMSTOWN HAND ROLLER DEFACER (HR)

**Issued** Grahamstown in 1854

**Frequency** of 5.6% (38/681)

**Scott #s not found on** are 1 a 2-2a Sa 8a 9a 9c 12-1 Sa



**Comments:** This cancel. originally intended to deface [newspapers. is](#) only known used at Grahamstown with one exception noted below. The HR cancel is quite common on the wood block issue (11 % of all wood blocks sampled were defaced with the HR), however, e never seen it on a 4d Dark Blue or retouched corner Of significance is the fact that no DLR stamps in my sample were defaced with this cancel which suggests its withdrawal before 1564. The HR exists with a single row of bars and also two parallel rows of bars, however. I did not distinguish between the two.

**Variety:** A rare variety consisting of two small rows of parallel bars has been documented on cover as been used at Riversdale and a second copy on a =1 block of four in the collection of Eugene Bowman

### IV DATED TOWN OVAL (DTO)



Issued	Town	Earliest Date	Date on Triangle	On Scott #
	Alice	3/10/54	3/10/54	2
	Bredas-Dorp	9/8/54	None	18h
	Burghers-Dorp	2/3/54	1/1867	5a
	Cape Town-	11/4/53	11 /20/63	7.5a.6a,8a
	Cradock	4/29/54	4/28/55	1.6a
	Fort Beaufort	7/27/54	7/54-4/22/61	2a,6a(2 ),14b
	Lady Smith	4/28/55	4/9/60	6a
	Lily-Fountain	6/2/60	7/6/64	6a
	Piquetberg	12/17/53	5/2/67	20
	Port Elizabeth	12/26/53	<b>2/55</b>	la
	Post Retief	1863	1863	6a, 19a
	Richmond	9/9/54	<b>1/20/55</b>	6a



## *CGH Triangle Cancellations...cont'd*

Somerset East	5/ 13/54	4/ 18/61-4/25/61	8,13.14a
Uitenhague	5/ 15/54	10/55	6

**Frequency** of 4.4% (10/68) 1

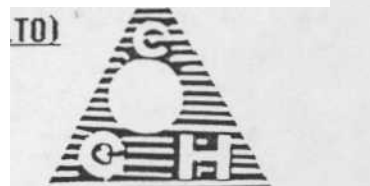
**Scott #s not found on** are 1,2,3a,5a,5b,7-7b,9a-9c,12a,15-15a

**Comments:** The earliest known dates are from Goldblatt's book except for Alice and Post Retief where the cancel dates on the triangle were earlier than Goldblatt's and are therefore new earliest use dates. I recorded four Cape Town and Fort Beaufort DTOs. three Post Retief and Somerset East. The rarest cancel is Lily Fountain of which only a few copies on cover of this cancel are known. This cancel is relatively uncommon in red. Goldblatt mentions the towns of Elandspost. Swellendam. and Zuurbron as also being found on triangles and the possibility of further towns existing is strong.

LI **LARGE TRIANGULAR OBLITERATOR (L**

**Issued** at various Post offices. 1857----%

**Frequency** of 4.6% (31/68) 1



**Scott #s not found on** are 1-2.6,12,13a

**Comments:** the LTO was used from 183" for fiscal purposes; however, due to a shortage of defacing implements the LTO was used for postal purposes from 1857 onwards It is distinguished from the STO in that it has 19-23 bars (STO 16-19) and the bottom line of the inner circle is broken. The above frequency may be higher due to the difficulty in distinguishing between the STO and LTO.

UI **UNLINED CIRCULAR CANCEL (UC)**

**Issued** at the Cape Town General Post Office. 1857-1864



**Frequency** of 1.5% (10 /68) 1

**Scott #s not found on** are all except 3,6,6a,14,15

**Comments:** The UC was introduced to backstamp mail to and from overseas **in red**; however, triangles cancelled with a black UC are known also.

UII **PORT ELIZABETH SEAL CANCEL**

**Issued** at Port Elizabeth on 28th January. 1859

**Frequency** of 1.5% (10/681)

**Scott #s not found on** are all except 3,3a,5a



**Comments:** This cancel's intended use was as a mail bag sealer however, **in** triangles (including two on cover) are known with this cancel.

UIII **CIRCULAR DATED POSTMARK (Cape Town)**

**Issued** at Cape Town, 1864

**Frequency** of 1% (7/681)

**Scott #s not found on** are all except 1a,2,3,5a,12a



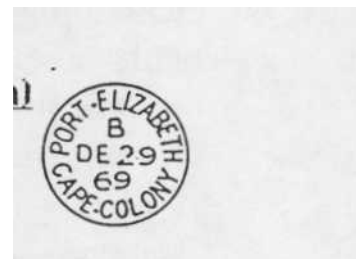
**Comments:** Despite the fact that this was issued in 1854 a copy is found defacing the 1d and 4d of the 1853-55 PB issue which indicates that this PB issue was used in Cape Town some time after its date of issue

III **CIRCULAR DATED POSTMARK (Port Elizabeth)**

**Issued** at Port ELizabeth. 1864.

**Frequency** of 0.7% (5/681)

**Scott #s not found on** are all except 3,3a,5a



**Comments:** Despite the fact that after March 1865 this and the above cancel were officially authorized for defacing stamps it is extremely rare on the DLR issue with only one Cape Town cancel known on a 12a.

H **COLORED CANCELS**

<b><u>Color</u></b>	<b><u>Cancel Type(s)</u></b>	<b><u>Number Known</u></b>	<b><u>On Scott #s</u></b>
Blue	STO	1	1
Green	STO	2	7b
Red	STO,LTO,DTO,UC	33	1,1 a,2a,3,4,5,6,7,9



## CGH Triangle Cancellations...cont'd

HI



### RARE LOCAL CANCELS



Cancel	Number Known	On Scott #s
Registered Letter Datestamp	6	3,5,6,14
Potchefstroom Z.A.R. 1865	4	4,6,14
Rouxville Orange Free State	3	4,2
Octagonal Numeral Stamp 1849	2 #s 52,53)	2
Cork Obliterator	1 on cover!	13
Double Arc Datestamp 18>%	1 'SaronI	13a
Kalk Bay CDS	1 1 bank'!	13



Hil

### RARE FOREIGN CANCELS

Cancel	Number Known	On Scott #s
London '12' duplex cancel	1	5
Liverpool Octagonal Cancel	1	1
Devonport '255' cancel	1	15
B53 Port Louis-Mauritius	1	6a
B16 Peninsular and Orient Line	1 (on cover ±	6a
10' USA charge mark	1	6
Shiplotter cancel	1	6a
Boston '5' receiver CDS	1 on cover)	4

**CONCLUSION:** It is quite apparent that cancels found on the Cape triangles is a subject in itself. Due to the sources of my sample the frequencies of these rare cancels are probably slightly higher than in reality, nevertheless they do give an accurate representation of rarity I would appreciate collectors with additional cancels./data sending me relevant details. If any collectors wish more detailed data (sources of unique data etc) I will be happy to oblige.

Data was compiled from the following collections.

C. Emerson Huston 1961 D Fairbanks 1969. Sir Maxwell Joseph  
1982. Maximus 1989, Dale and Lichtenstein 1989, Stephan Welz 88  
Guy Dillaway, John Rightmire. and Rae Wolpe.

**THE FREE STATE**Pre-Stamp Postal History and the First Definitives

Tim Bartshe

From the first settlement following the Great Trek of 1836 until the proclamation of British sovereignty over the territory by Sir Harry Smith in 1848, there was little need of any form of postal organization. The farms, what few there were representing the two thousand settlers, were spread out over an enormous area. After the establishment of Bloemfontein as a town by Major Warden, a need for postal communication with the colonial office at Cape Town surfaced. Contract delivery was arranged with individuals. The first appointed postmaster for the area was William Collins, a schoolmaster, hired at an annual salary of £12 per annum, beginning on April 1, 1851.

Postage rates were 6d per 1/2oz for delivery anywhere within the sovereignty, prepaid. External mail to the Cape required additional postage. Overseas mail required further ship mail charges, which amounted to 10d. Markings indicating the internal movement of mail was absent until well after the British withdrew their Sovereignty in 1854. Figures 1 and 2 are examples of such pre-stamp covers. Whether these items were put through the system as described or hand delivered by an interested party, is unknown.

On February 23, 1854, the first Volksraad convened, electing President Hoffman. He maintained the status quo and, effective January 1, 1855, set up a system of 28 magistrate districts, each of which was to have a post office. As the Republic grew and new towns were established, new postal routes were required to serve the increasing number of literate citizens. By 1866, President Brand recognized that some centralized order was necessary and appointed H. Sybouts as the first Postmaster-General. Mr. Sybouts quickly arranged the issuance of stamps for the Republic, which by the time issuance had grown to a population of some 30,000 souls.

Sometime after 1854, the new government apparently issued the major post offices a circular defacing stamp which contained the post office name above and the word "BETAALD" or "Paid" below. The towns known to have had this defacer include Bloemfontein, Smithfield, Winburg, and Fauresmith. As it was required to prepay postage for external as well as internal use, it was deemed convenient to have on hand at the major offices a supply of Cape triangles. These were then applied to the letter in the appropriate amount depending upon the ultimate destination. To prevent reusage of the stamps, it was required for them to be defaced by a cancel (see Freund, 1947, SAP, p24-5). Figures 3 thru 5 show an example of such a cover sent from Smithfield by Francis Orpen who was involved in the surveying of the Orange River Sovereignty from 1852. Figure 3 shows the Smithfield/Betaald cancel defacing 2 of the 3 COGH stamps used to pay the tariff to Ireland. These defacers were used until the

advent of postage stamps. For further information refer to an article by Jurgens in the SAP of April, 1947. These cancels can be found on single triangle stamps which were soaked off-cover. It would certainly be worth a look to find an example of these exceptionally rare postal history items.

Based upon the design of President Brand, Sybouts commissioned de la Rue & Co. of London to typographically print the issues which were to become the only design used by the Free State throughout its life. The plates were arranged in the then standard format of four panes of 60 stamps yielding sheets of 240 stamps. Only one plate for each value was ever made even though the printer recommended replacements after 35,000 sheets. The 1d, in both colors, had a printing of 104, 128 sheets! All total, de la Rue printed 52,998,240 stamps from June, 1867 through September, 1899.

All of the stamps were printed on medium wove white paper without watermarks and comb perforated 14. The first issues were perforated by Somerset House which was capable of only a single row of perforations down the vertical gutter between panes. This caused the distinctive wing margins which typify the early issues of the Republic. The Somerset House machine also had poor register which caused irregular junctions. After 1878, all of the stamps were perforated by de la Rue with a machine which had better register and perforated both sides of the gutter, thus eliminating the wing margins. Figure 6 shows the difference of the two perforation devices.

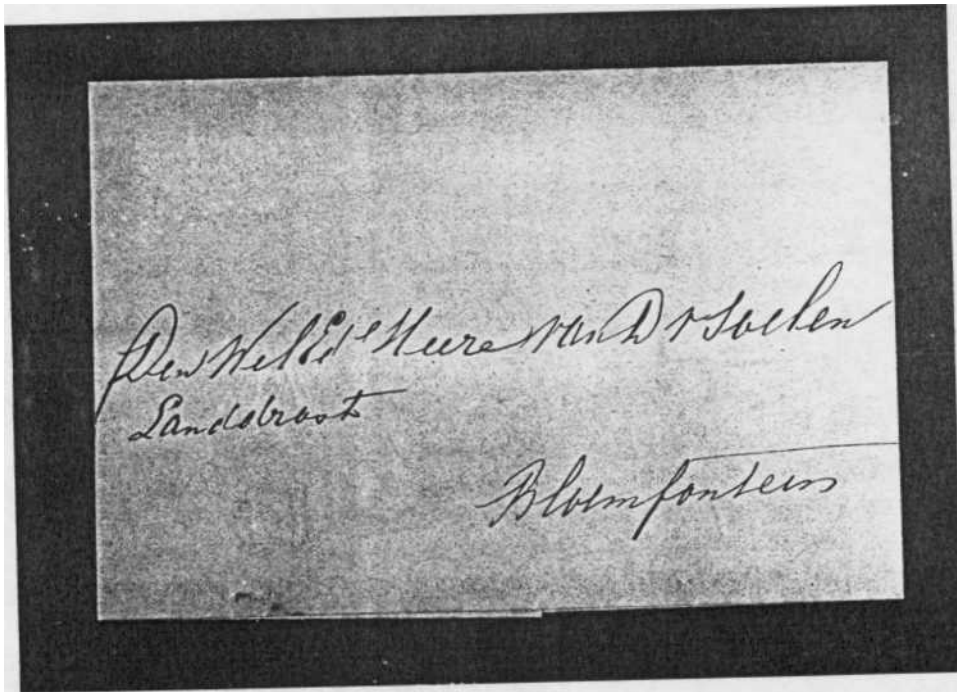
The first stamps, available on 1/1/1868, were the 1d, 6d, and 1sh for newspaper, 2 ounce letter, and registration fees, respectively. This first printing was on a slightly toned paper with cracked gum and represents the scarcest of all the shades with only 770, 460, and 140 sheets ordered. Two more printings of the 1d, three of the 6d, and another of the 1sh, along with the first printings of the 4d and 5sh were all perforated on the Somerset House machine. Virtually all of these printings can be distinguished from one another by shade, even without the characteristic wing margins.

As the postage rates were changed, new denominations were ordered from de la Rue. In all, eight values were ultimately printed; the 2d, 3d, and 4d representing decreased letter rate, the 2d a decrease in newspaper rate and the introduction of a postal card rate, and the 5sh, necessary for heavy registered parcels. In 1892, in accordance with an agreement with the COGH, the letter rate to the UK was set at 2 d. The frugal Volksraad, however, never ordered this definitive, and instead met its heavy demand with provisionals for eight years. In 1894, a new color scheme was adopted and new orders made to London as the need arose. The 2d yellow/orange, 1d violet, 6d ultramarine and 1sh brown were the only values so issued in the new color scheme. In fact, due to the low demand for the 6d rate, the ultramarine-colored stamps were never issued by the Republic and the complete printing of 4,080 sheets was

intact when the British occupied Bloemfontein.

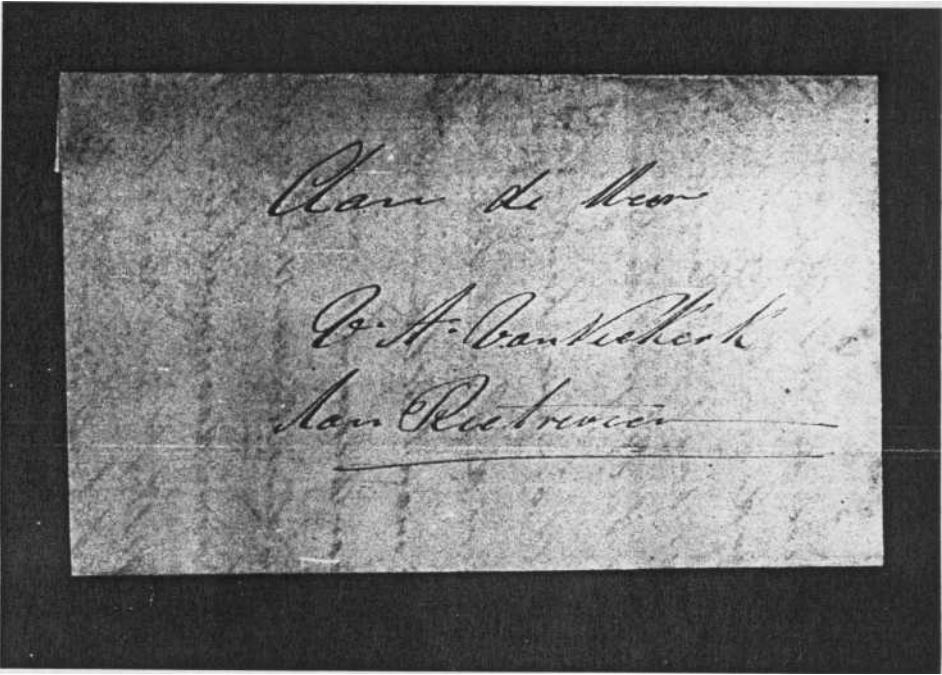
The printing of the stamps, as well as the production of the working dies of each value, was done with care and plating varieties are not obvious without high magnification. The only major variety listed by Gibbons is the 1sh orange-yellow double print. It is unknown exactly how this variety occurred, but is quite striking. An example is shown in Figure 7.

As stated previously by me, if it were up to the definitives themselves, the collection of Republic issues would be short and dull indeed. Fortunately for us, these simple denominations were used with great imagination and frugality in the ever changing postal rate and demand environments caused by the growing and intelligent population of the Orange Free State.



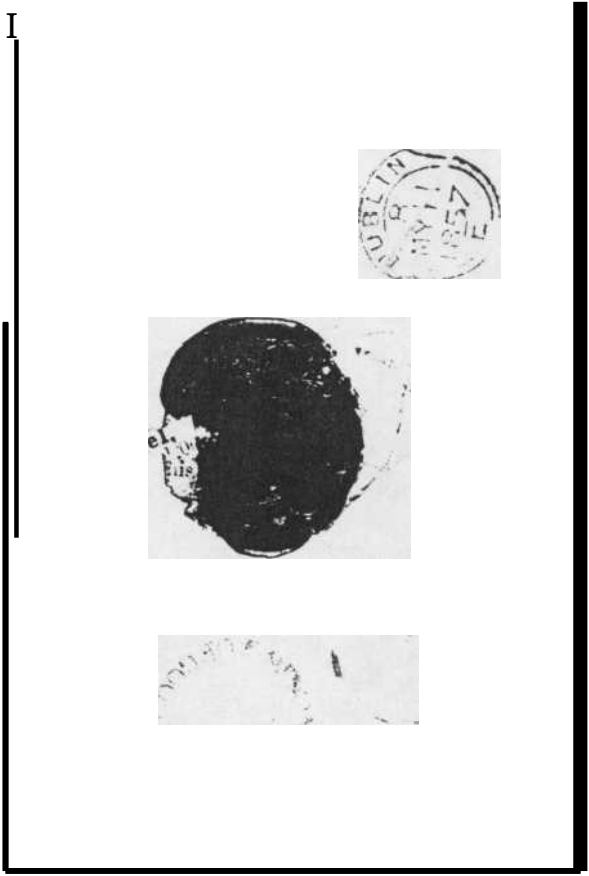
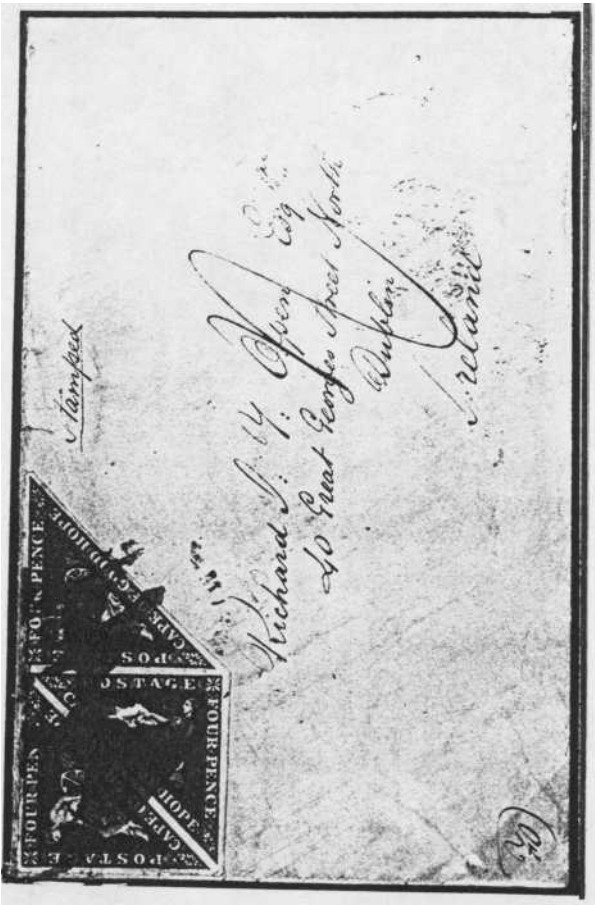
**FIGURE 1**

Envelope to Bloemfontein (no date)



## FIGURE 2

Local Letter with Afrikaans Message (dated 1855)



FIGURES 3 AND 4

## Obverse and Reverse of Pre-stamp Cover Originating in OVS

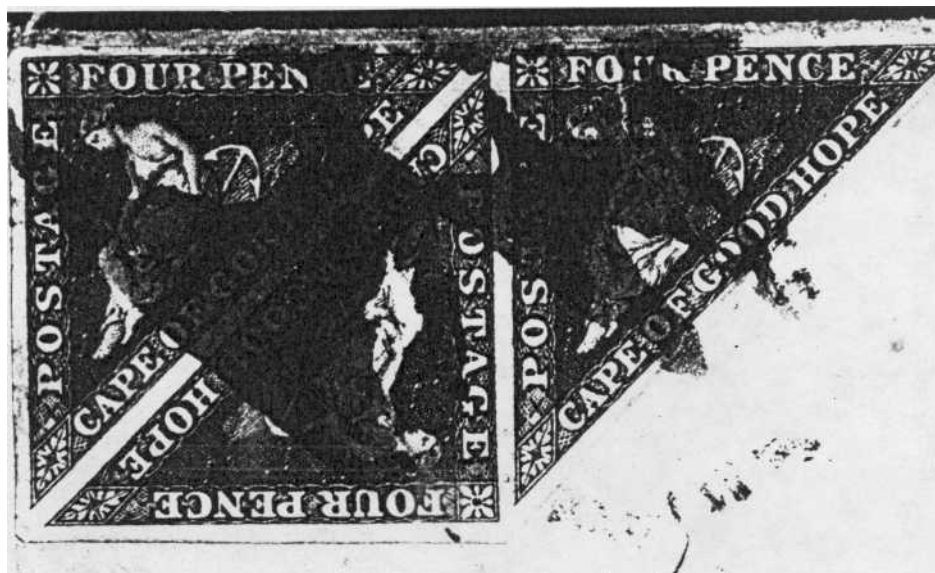


FIGURE 5

Closeup of Same Cover Showing "Smithfield/Betaald"

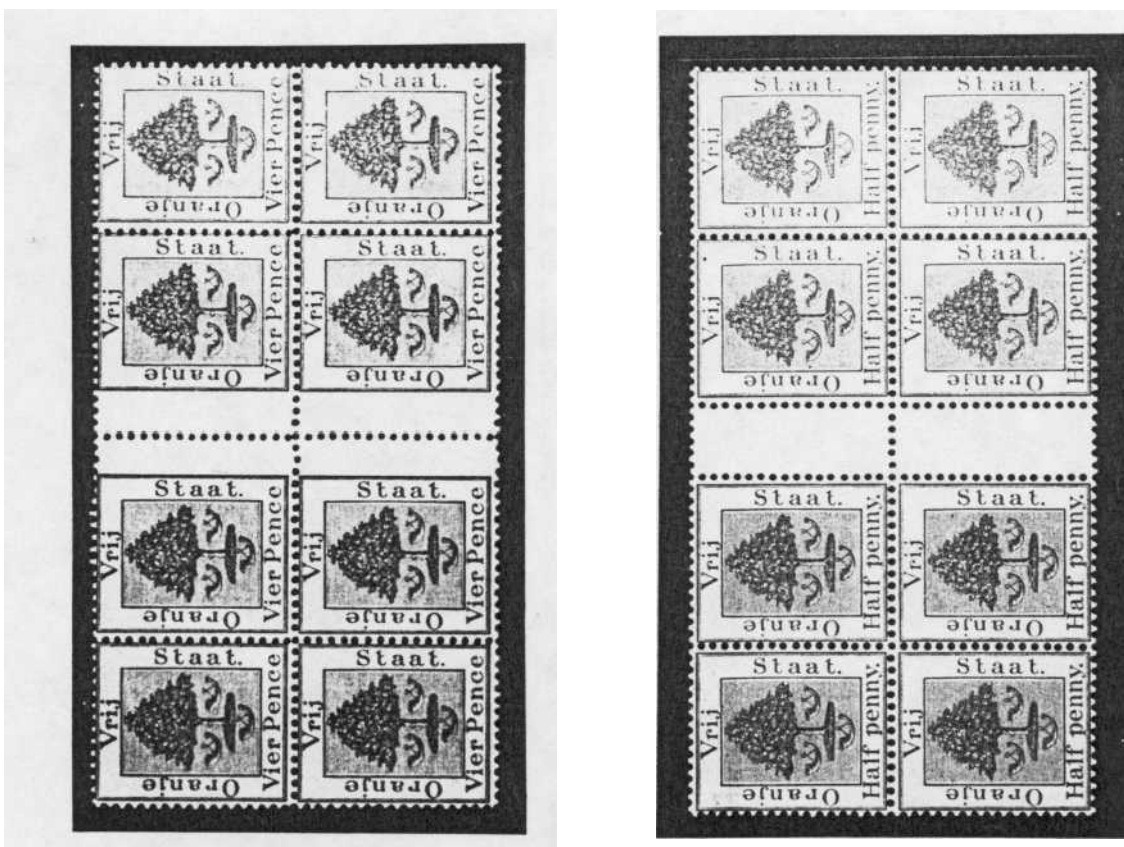


FIGURE 6

Gutter Perforations: Somerset House vs. de la Rue  
Machines



FIGURE 7

1 Shilling Orange-  
Yellow overprint Doubled



### One Hundred Years Of The Barberton Post Office: Part I

By: Werner K. Seeba

#### THE PLACE

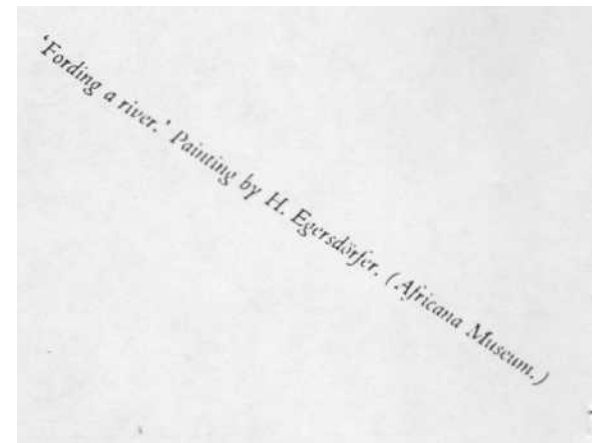
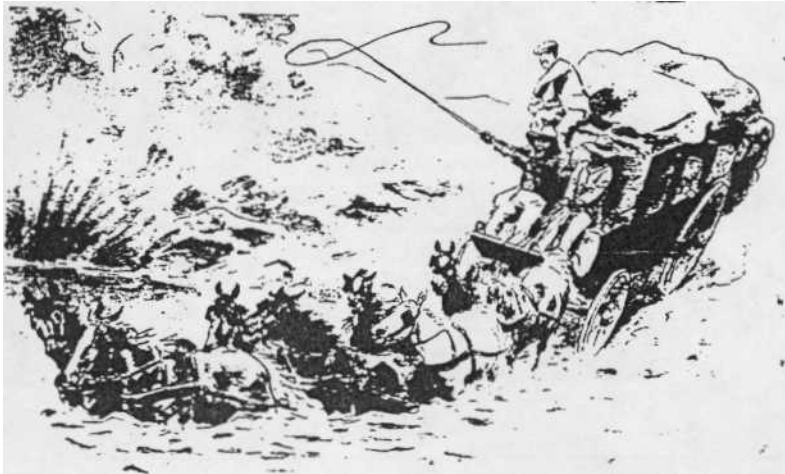
The valley in which Barberton lies was known to early prospectors as the "Valley of Death", regarding various poisonous snakes, tsetse flies and malaria mosquitos. Many early explorers died, but traces of gold in rivers and reefs constantly attracted roamers. In 1874, one of the earliest prospectors, Tom McLachlan, found traces of alluvial gold in the area. The first payable gold found in the valley near Barberton was the Pioneer Reef, discovered by French Bob (Robert August) on 3 June 1883. This discovery was the lure for the largest onslaught of fortune-seekers to reach South Africa up to that date. Among those who came to the valley were Graham Hoare Barber from Natal, and his cousins Fred and Harry Barber.

On 21 June 1884, Mr. Barber informed the State Secretary that he had discovered a very rich gold-bearing reef on State land in the De Kaap Valley, District of Lydenburg. On 24 June 1884, the Mining Commissioner for East Transvaal, David Wilson, visited the mining camp Barber's Reef. Already known as "Barber's Camp", Commissioner Wilson proclaimed it a township and named it Barberton. The next month Barberton shot up like a mushroom. The name of Barberton was said to have been written up in the newspapers in Europe and other places in the world, as at the same time other numerous gold reefs of equal value had been found in the area. A flood of diggers arrived on the scene (Illustration A) and a hodgepodge of tents, shacks, stores and canter sprung up.

During 1886, Barberton was at the height of its boom. Two stock exchanges traded night and day - the Naan and Transvaal exchanges.

Dozens of canteens, liquor shops and music halls competed with the mines to make the greatest profit in town. The first stock exchange building in South Africa was opened at Barberton on 13 April 1887.

*Illustration A*



During the middle of 1886, Barberton had a population of 20,000 which made it the largest town in Transvaal at the time. Upon the discovery of gold on the Witwatersrand, people flocked now to this new El Dorado, and by the middle of 1887 the exodus from Barberton was as great as the influx had been, with the result that stock exchanges, newspapers, bars and gambling halls closed down. Some mining activity saw Barberton through this crisis, but it had to undergo transformation from mining to agriculture and a fort station which gave the town lasting prosperity.

On 13 October 1893, the railway from Kaapmuiden to Barberton began. In 1904 it became a municipality and in 1907 street-lighting was introduced. One-hundred years ago, it was truly one of the infamous glamour towns of the goldmining world. Today it is a charming, atmospheric country town with nicely flowering gardens, many old buildings still standing.

#### POSTAL HISTORY

Regarding the many diggers and business people at one place like Barberton, to most in those days it was known as "Barbers Camp". A coach-wagon station and outspan to change horses or oxen was possibly established already by 1884. Also, a semi-official, private postal facility was arranged for at that time.

It is known that the first letters and parcels from diggers of the Barberton digging places had been posted at the nearest poststation - "Kaapsche Hoop Goudvelden" (Illustration B), which opened in 1882 as P.O.A. DUIWELSKANTOOR (Devil's Office).

In 1882, an ex-policeman named Bernard Chomse claimed to have found gold in the bed of a



*Illustration B*



little stream on a high narrow plateau, between the valleys of Eland and Little Crocodile River, ending in the Crocodile River Valley. A rush took place to the area which the diggers called "Duiwelskantoor", possibly given by the surveyor G.P. Moodie. The mountains of this region are so rugged that only the devil could live there.

The valley is often covered in mist, and the plateau then resembles a cape in a sea of [clouds](#). It became known as the Kaap ("cape"). Therefore, the center of the gold rush was named KAAPSEHOOP ("hope of the cape").

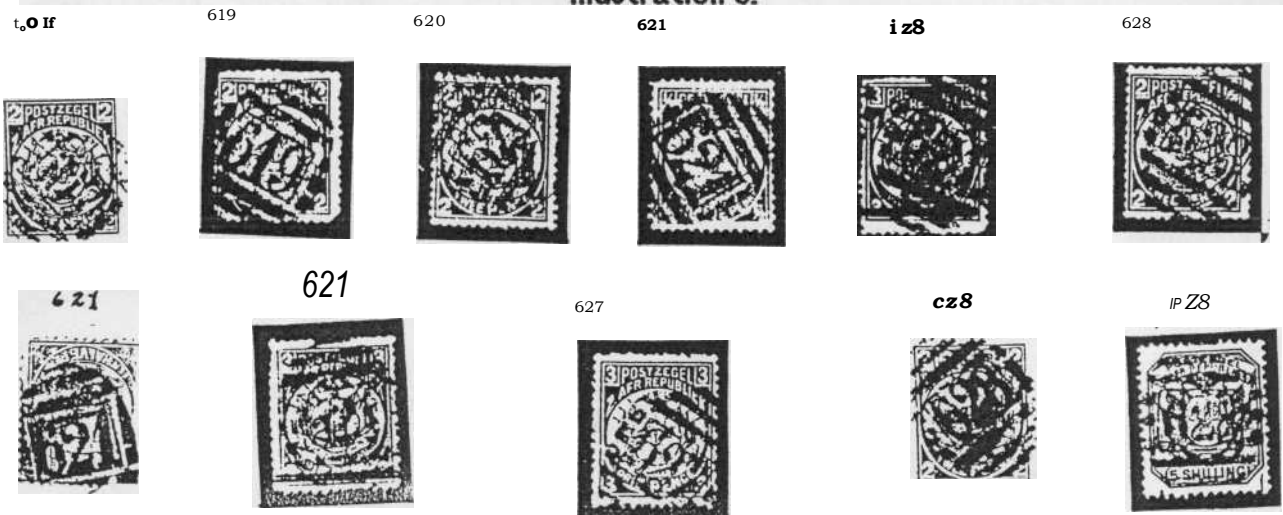
#### POSTAGE RATES

From April 1st, 1885, the postage rates for letters within the Transvaal Republic (Z.A.R.) were reduced from 4d to 2d *per 1/2 oz*; and for inland mail, from 3d to 2d *per 1/2 oz*. The tariff for newspapers was reduced from 1d to 1/2d. On insufficiently franked mail, double the amount of the shortage was claimed before delivery. At the same time, postcards were introduced in the Z.A.R., which proved an immediate success.

#### FORERUNNERS

As I remember, it has been said by the late Dr. Hasso Reisener and Manfred Weinstein of Pretoria, that in about April 1886, an official Inspector of the Transvaal G.P.O. Department, who was charged to establish new agencies or offices, had visited the Eastern Transvaal Goldfields regarding various petitions from the area for a postal facility. In the goldrush time of 1886, the G.P.O./Cape Town helped out for newly opened agencies in the beginning with the oval-barred-numeral-canceller (brass obliterations). BONC "607", Ferreira's Camp, Witwatersrand, Heidelberg District is an example; also, BONC #s 619, 620, 621, 627, & 628 (Illustration 3), had been delivered to the Transvaal. The BONC's between are used in the Cape Colony. The **BONC's on Z.A.R. stamps have** been used in the Eastern Transvaal goldfields, **possibly** for instance in the Lydenburg District, coming from the north, traveling to the south.

Illustration 3.



The Items offered In the above Illustration include: #619 - Kaap Kantoor (P.O. Eureka City, 1887), #620 - Sheba Reef Hill (P.O.A. Fairview, 1877), #621 - Barber's Camp (P.O. Barberton, 1 Oct. 1886). On April 4th of the latter year, the first newspaper, The Barberton Herald (also known as "chit-chat on the camp"), was published.

The BONC 621 Is seen mainly on the 1/2d grey Z.A.R. (2nd Republic) stamp (SG#175), postage for newspapers. It may have been used on letters or postcards, but I have not seen any proving documents to that effect. The BONC 627 was for Moodie's Kaap Goldfield (P.O.A. Moodie, 1887). Further down, BONC 628 was used at Painter's Camp (P.O. Steynsdorp, 1887). It Is known that mail from the Royal Kraal, Embekelweni, In Swaziland, had been carried by native runners to the newly established New Paarl gold field, Steynsdorp area, where the letters were stamped with the current Transvaal Republic stamps, cancelled at the same place and transported further by mailcart or mailcoach to Chrissis Meer. The latter was the next Post Office Agency before Steynsdorp (Steijnsdorp) was officially opened on the 15th of April 1887 as Post Office PWK/MOO... end Part I

### -----The Most Noble Order Of The

#### **Garter And The Southern Africa: Connexion** Guest Article By: John Hodgson, A.I.J.P.

The order was Instituted In 1348 by Ling Edward III of England and It Is said that the Garter adopted as Its emblem because of the following Incident: At a ball, the King picked up a garter dropped by Joan of Kent, Countess of Salisbury. He promptly put It below his one knee and announced to those who laughed "**Honi Soit** qui mal y pense" (Evil to him who evil thinks) and that they would shortly prize such a lowly object. Those primary words are now the motto of the order.

## *Order Of The Garter ... cont'd*

Seal  
of  
The  
Order



### **Membership of the Order is restricted to the**

reigning British monarch and 25 Christian knights. Selected foreign heads of state are also admitted to the Order and are known as "extra Heads and Ladles" of the Order. This is the highest honour that can be bestowed by the Monarch.

Over the years, Knights of the Garter have been associated with Southern Africa, and these have been divided into four categories. Where there is no stamp bearing his/her portrait, use has been made of a postmark as an illustration.

1. TOWNS NAMED AFTER KNIGHTS (date of founding shown bracketed):



Henry, 6th Duke of Beaufort (1820); John, 6th Duke of Bedford (1820); Henry, 3rd Duke of Richm (Richmond, Cape-1844 and Richmond, Natal-1850, as shown above); King William IV (Kigwllamstown-1835); Prince Albert (Prince Albert Road-1855); George, 4th Earl of Aberdeen (1856); Alfred, Duke of Edinburgh (Port Alfred & Prince Alfred Hamlet-1855 & 1861); John, Earl of Kimberly (1871); Benjamin Disraeli, Earl of Beaconsfield (1881); Robert, 2nd Marquess of Salisbury (now Harare-1890); Arthur, Earl of Balfour (1907); and Henry, 5th Marquess of Lansdowne (1922).

## **FORERUNNERS, Vo.IV.No.1-Feb/May'80 p34**

### **2. KNIGHTS WHO SERVED SOUTH AFRICA**



Alfred, Lord Milner - Governor of the Cape of Good Hope (1897) and the Transvaal and the Orange River Colony (1901) - Millnerton (1898); Arthur, Duke of Connaught - Governor General of South Africa 1920-23 (Jersey 1977, lip); and Alexander, Earl of Athlone - Governor General of south Africa 1923-31.

### **3. KINGHTS WHO HAVE VISITED SOUTH AFRICA**



Alfred, Duke of Edinburgh 1860 (Tristan da Cunha); Sir Winston Churchill 1900 (Various stamp Issues); King George V 1901 (various); Queen Mary 1901 (Newfoundland 1932); George, Duke of Kent 1934 (Newfoundland 1932); King Edward VIII 1925 (various); Philip, Duke of Edinburgh 1947 (various); King Paul of Greece (various); King George and Queen Elizabeth 1947 (various); Queen Elizabeth II 1947; and Bernard, Lord Montgomery 1948 (Umm Al Qlwaln 1965).

### **4. KINGHTS WHO WERE MILITARILY INVOLVED IN SOUTH AFRICA**

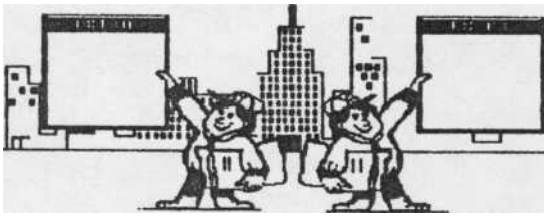


***az W of f/t (VI'4W..4 xwf I***

Arthur, Duke of Wellington 1798 and 1805 (Wellington founded 1840 - St. Helena 1986); Frederick, Lord Roberts 1899-1901; Military cantonment named Roberts Heights 1902 and renamed Voortrekkerhoogte 1938; William, Earl Lonsdale 1899-1901; and Horatio, Earl Kitchener 1899-1901 (Cyprus 1979 50p).

This article is intended merely to indicate how a facet of South African history can be compiled and philatelically illustrated at minimum cost but with maximum pleasure.

~a~a~~seasea..~a~a==a~~aa~aas~sm~a



#### **7ALF CLAS:SYF7EOS**

Revenues derived from the placement of ads and back issue orders, are used to defray publication costs and to improve the quality of the Society's award-winning journal, Forerunners. The following is the Society's procedures for the placement of ads:

\*Brief non-commercial ads free to members.

\*The rates for non-member & commercial ads are -  
**SMALL ADS:** 5-cents US per word per Issue. Separate numbers and/or symbols count as a word; return addresses are not counted.  
**LARGE ADS:** 1/4 PAGE - \$BUS per Issue or \$20US per year (3 Issues); 1/2 page \$14US per Issue or \$35 per year; full page - \$20US per Issue or \$45US per year.

"Submission deadlines for ad copy are: December 31st (Feb/May Issue), May 1st (June /Sep Issue) and September 1st (Oct/Jan Issue)

**FORERUNNERS..VoLiV,No.1-Feb/May'90 p35**

**WANT LISTS WELCOMED FOR ALL**

**6WT/SNAFWIC4**

**PRICE LISTS BY COUNTRY**

**G Y .9 LEAF E STAAAFS**

**P\_ O. bt7X.c**

**sgE**

**NA 4/170 LS4**

**WANTED - G W4V,&AAC H'EST stamps, revenues, postal history, picture postcards, cancels and books. CAPE cancels "barred oval-diamond-numeral", #1-11, BONCs 227, 232, 252, 260, 321, 404, 428, 432, 433, 477 & 529.**

**Traisvaa/ cancels: Bloemhof, Christiana, Taungs, any southwest town. LY !' cancels any place west of Bloemfontein. Ste//a/aid forgeries. Ron Carlson, 5751 Cedar Ave., Long Beach, CA 90805 USA -----Member**

**has extensive lists of literature dealers and auction houses available for those whose only weak spot in their collections is their philatelic reference library. Write to Rae Wolpe, Bates College, Box 770, Lewiston, Maine 04240 USA ---**

**-----Nick Meisel is completing Vol. II of his Transvaal Handbook which deals with the Vurtheims, Enschede, Queen's and King Heads. He is still looking for 7 or 8 marginal panes to complete the Enschedes. If you can be of some help, write him at: P.O. Box 7127. Brackendowns, 1454, RSA -----**

**CLASSYF/EDS A' SY'1EGIAL A/dW 1AK  
CEAFXTC DNT1AW&DONA 7TPAGE-**

*C/as i \* . . ca tf*

- FORERUNNERS- VolJVJNo 1-FebIMay'90 p36 -----

-----  
Tim Bartshe Is Interested In any and all material pertaining to the Orange Free State, particularly with regards postal usage and multiples of stamps for "fly-specking". Will buy or trade from my enormous stock of other pre-Union material. Write to: 8826 W. Custer Pl., Lakewood, CO 80226 USA -----

-----  
PSGSA HAS TWO (2) COPIES OF THE TRANSVAAL HANDBOOK FOR SALE AT \$6US WHICH INCLUDES POSTAGETHIS VOLUME DEALS WITH THE GENUINE AND FORGED STAMPS OF THE FIRST REPUBLIC- AS OUR DIRECTOR OF ARCHIVES SAYS: 'THIS BOOK IS INVALUABLE FOR 1ST REPUBLIC COLLECTORS\_' PLEASE ORDER FROM TIM AT HIS ADDRESS IN THE PREVIOUS AD-  
-----

-----  
Anyone have any Information, covers, etc. on greater southern African private posts, such as Griqualand East? If so, please forward to the Editor for publication In the next Issue. -----

-----  
*raw free ArAdw mar r'oWd Avre loalife0  
grit IlsrgW*  
-----

THE PRECIOUS POSTAGE  
STAMP

The lowly little postage stamp It  
only costs a pittance  
But when I order seeds or flowers, It  
carries my remittance. It carries to a  
shut-in friend My hopes that he or  
she is better; It carries all my love to  
you Each time I write a letter. It  
brings me all the latest news Of my  
children far away; It brings the  
books and magazines I look for day  
by day.' All these things and many  
more These little stamps can bring; It  
seems to me a postage stamp is a  
mighty precious thing. -Reno Folta,  
Wellsuille, Missouri.

**CALL FOR PAPERS' TO B DISCONTINUED!**

The tradition has been to send out notice to the members on the next deadline IF o receipt of material for Bits & Pieces, featur articles, letters to the Editor and ads. This procedure was Intended to remind members that they need to get their items sent In by a specific deadline. It was also intended to be a subtle "arm-twisting" mechanism to assure that we had something to print.

As of late, material has continued to flow In on a continuous basis, such that sending "Call For Papers" announcements three times per year appears to be an unnecessary expense. We will save over \$60 In printing and postage costs by discontinuing this mailing.

If you desire something to appear in a specific issue of Forerunners, the following submission deadlines apply:

\*May 1st for the Jun/Sep Issue \*Sept.

1st for the Oct/Jan Issue \*Jan. 1st

for the Feb/May Issue

For those looking for a topic to submit on for Bits & Pieces or a feature article, don't forget the topics that have been listed at the beginning of these two sections.

Everyone contributing to each Issue has done a fantastic job! How about YOU?!

• START PREPARING YOUR AUCTION LOTS AND SEND THEM BY THE MAY 15TH DEADLINE. • PLEASE COMPLETE AND RETURN THE FORERUNNERS SURVEY FORM AND BALLOT FOR THE MEMORIAL AWARD. . UNTIL NEXT ISSUE .. THAWS - YOUR EDITOR, BILL.